

Lean On Me

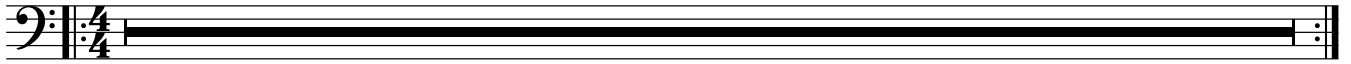
BACK CHAT PLAY

♩ = 117 Double Time Township Feel

Withers
Arr. Simon Dennis

DRUMS INTRO

4

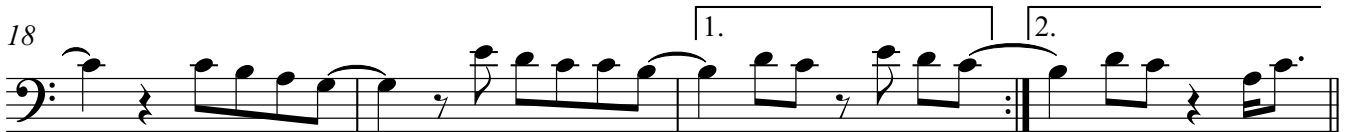


VERSE - SING!



Sometimes in our lives, we all have pain, we all have sorrow,
but if we are wise, we know that there's always tomorrow

DOUBLE CHORUS



BRIDGE



'We all need somebody, to lean on'

To Coda



'We all need somebody, to lean on'

CHORUS



D.S. al Coda



⊕ Coda

Concert Bass Clef

38 SOLO
 C F C C/G G

C Pentatonic Scale

42 C F C G C

46 BREAKDOWN - SING! 2nd X Only

*'You just call on me brother, when you need a hand, we all need somebody, to lean on
 I just might have a problem, that you'll understand, we all need somebody, to lean on'*

54 DOUBLE CHORUS

58

63 DRUMS OUTRO 4